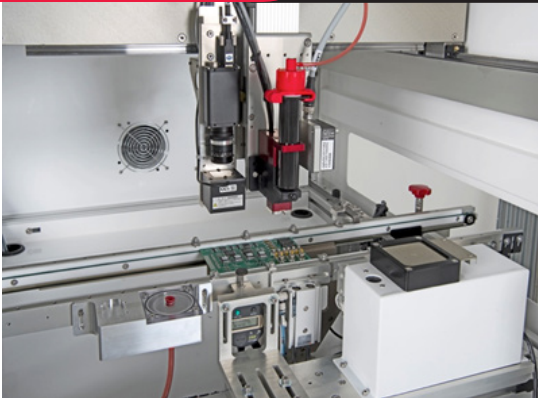




INNOVATION. PRECISION. EXCELLENCE.



System Specifications

Gantry System Design

Closed loop brushless DC servo motors with optical encoders and ball screw slides on all axes

Work Area

1 Valve / Tool:

621 mm x 595 mm x 100 mm
(24.45 in x 23.43 in x 3.94 in)

XYZ Repeatability

±25 microns (±0.001 in)

Resolution

5 microns (0.0002 in)

Maximum Acceleration

0.6 g

Footprint

1046 mm x 1270 mm x 2350.9 mm
(41.18 in x 50.0 in x 92.56 in)

Programming Software

PathMaster® software with offline image import and programming capability

Delta 8

Selective Coating/Dispensing System

The Delta 8 is a flexible robotic conformal coating/dispensing system that is ideal for selective coating, potting, bead, and meter-mix dispensing applications. Conceptualized for maximum flexibility, the system can also be configured for custom assembly applications.

Maintaining the preferred features of previous workcells, the Delta 8 features a robust overhead three-axis motion platform suitable for inline or batch operations. Improved structural and gantry rigidity have been added for robustness and easier access.

The Delta 8 has many options and integrated features including:

- Robotic system repeatability of 25 microns
- Patented servo-controlled optional four-axis motion featuring valve tilt and rotate
- Closed loop process control throughout gantry system
- Multiple dispensing applications or materials in one cell
- Onboard PC for unlimited program storage
- Exclusive PathMaster® programming environment

For more information, please contact PVA at info@pva.net or (518) 371-2684.



Delta 8

The Delta 8 is ideal for selective conformal coating and dispensing applications that require a high level of accuracy and repeatability in moderate to high volume manufacturing environments. It is a closed-loop robotic platform featuring optical encoder feedback on all axes.

Power 120V, 220V, 50-60 Hz
Air Supply 80 psi dry, unlubricated air

XYZ Specifications
 Gantry System: Brushless DC servo motors
 Precision ball screw slides
 XYZ Repeatability: ±25 microns (±0.001 in)
 Maximum Speed (XYZ): 670 mm/sec (26.4"/sec)
 Maximum Acceleration: 0.6g

Resolution: 5 microns (0.0002 in)

Payload Capacity: 11.36kg (25 lbs)

Standard Features

- PathMaster® Windows- based software
- FastPath™ offline image programming capability
- Onboard PC with flat screen monitor
- Remote teach pendant with trackball
- USB communication port
- Closed-loop low level exhaust notification (spray systems)

Optional Features:

- Servo 4th Axis motion featuring valve tilt & rotate
- Closed-loop material flow monitoring
- Inline material metering
- Bar code program selection
- Low level fluid sensor
- Valve and / or fluid heating
- Programming camera
- Active vision with XY correction
- Substrate heating – contact or non-contact
- Dispense zone weigh scale
- Multi-zone conveyor
- Conveyor auto width adjust

Board Handling

Conveyor Type: Flat belt or chain
 Minimum Conveyor Width: 50 mm (1.97 in)
 Maximum Conveyor Width: 500 mm (19.685 in)
 Board Clearance Topside: 100 mm (3.94 in)
 Board Clearance Underside: 100 mm (3.94 in)
 Edge Clearance: 4.7 mm (0.185 in)

Transport Height: 940 mm - 965 mm (37 in - 38 in)
 Communications Protocol: SMEMA
 Conveyor Options: Lift and locate, through hole pin, under board support
 Conveyor Speed: Up to 24.4 m/min (80 ft/min)
 Process Flow: Programmable right to left or left to right, bidirectional
 Weight Limit: 5 pounds (belt)
 15 pounds (chain)

Fluid Applicators

Spray Valves: FCS300-ES, FCS300-R/F, FC100-CF
 Dispense Valves: FC100-MC, FCM100, SB300
 Jetting Valve: JDX
 Auger Valves: SV200, SVX
 Progressive Cavity Pumps: PCP, PDP

Material Feed Options: Syringe (1-55cc)
 Cartridge feed (6-20 oz)
 Pressure vessel
 Drums, totes

**Backside of Machine: 80 - 100 PSI dry compressed air required
 Minimum 300CFM exhaust required**

Power drop required - See machine spec for voltage

