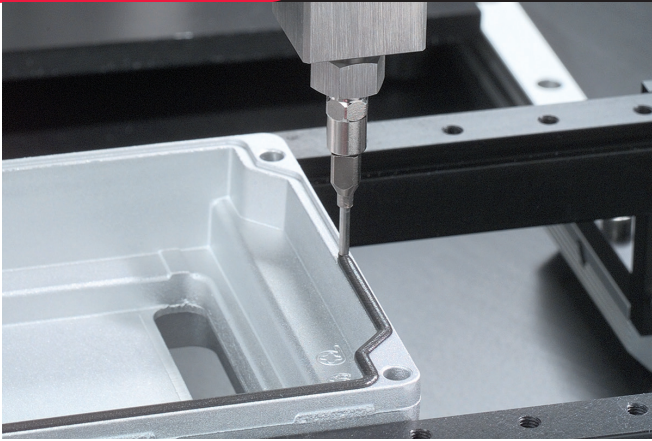




INNOVATION. **PRECISION.** EXCELLENCE.



Valve Specifications

Dimensions

201 mm x 29.21 mm x 29.21 mm
(7.9 in x 1.15 in x 1.15 in)

Weight

19 oz

Viscosity Range

1 cps - Paste

Operating Air Pressure

60 - 100 psi

Maximum Inlet Fluid Pressure

3500 psi

Wetted Components

Stainless Steel, Viton, Teflon®

FC300

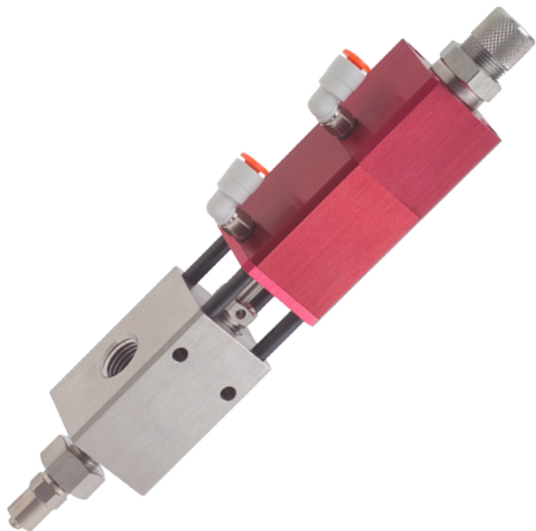
High Flow Stainless Steel Needle Valve

The FC300 is a versatile high flow dispensing valve for any single component bead, dot, potting, or encapsulation project. Featuring a lightweight, compact design, the FC300 is perfect for both automated and handheld processes in which a high volume of material is dispensed.

The FC300 has many integrated features including:

- Divorced valve design prevents material contamination of the air section
- Stainless steel fluid body for superior material compatibility
- 1/4" NPT fluid port allows higher flow rates
- Adjustable flow control
- Spring-assisted valve closure for reliable cycle stops
- Compatible with all Luer-Lok™ needle tips

For more information, please contact PVA at info@pva.net or contact your local representative.



Luer Lok™ is a Becton Dickinson and Co. trademark.
Teflon® is a registered trademark of Dupont.

Headquarters
6 Corporate Drive | Halfmoon, NY 12065
tel +1 518 371 2684 | fx +1 518 371 2688
www.pva.net | info@pva.net

FC300 Mounting Dimensions

