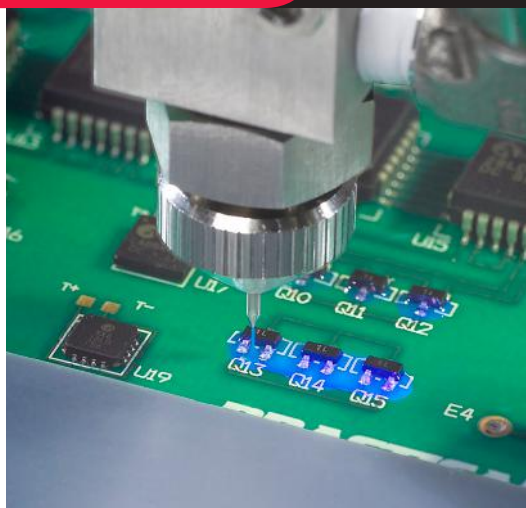




**WHERE  
PRECISION  
DRIVES  
PRODUCTION**



## **VALVE SPECIFICATIONS**

### **Dimensions**

152 mm x 19 mm x 19 mm  
(6 in x 0.75 in x 0.75 in)

### **Minimum Shot Size**

0.83  $\mu$ l

### **Minimum Line Width**

0.25 mm (0.010 in)

### **Minimum Orifice Inside Diameter**

0.08 mm (0.003 in)

### **Viscosity Range**

1 - 20,000 cps

### **Operating Air Pressure**

60 - 100 psi

### **Operating Fluid Pressure**

1-100 psi

### **Wetted Components**

Stainless Steel, Teflon®, Kalrez®

## **FCM100**

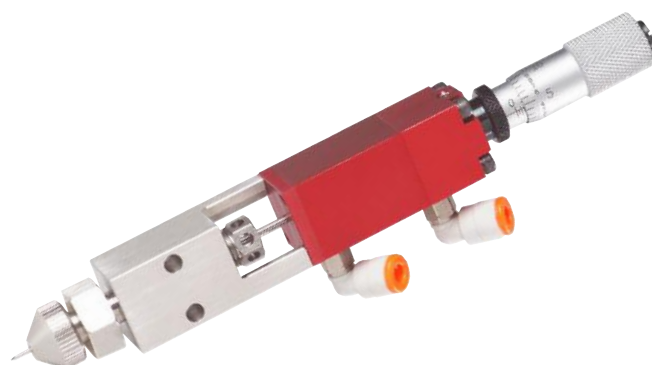
### **Non-contact Micro Dispensing Valve**

The FCM100 is ideal for any low viscosity underfill, encapsulant, conformal coating, and micro dot or bead dispensing project. The FCM100 “propels” precise shots or fluid streams onto a substrate resulting in accurate patterns at a high robot speed as no in process z-axis adjustments are required. The FCM100 is compatible with all PVA automated platforms.

The FCM100 has many integrated features including:

- Interchangeable micro dispense nozzle ranging from 10-33 gauge, all stainless steel or ceramic construction
- Micrometer flow adjustment with lock ring
- inMOTION™ dispensing with no z-axis motion needed
- Highly repeatable dot size results in superior pattern definition
- Dot and continuous line dispensing profile capability
- Reduced nozzle fluid volume for clean and precise application of fluid

For more information, please contact PVA at [info@pva.net](mailto:info@pva.net) or (518) 371-2684.



# FCM100 Mounting Dimensions

