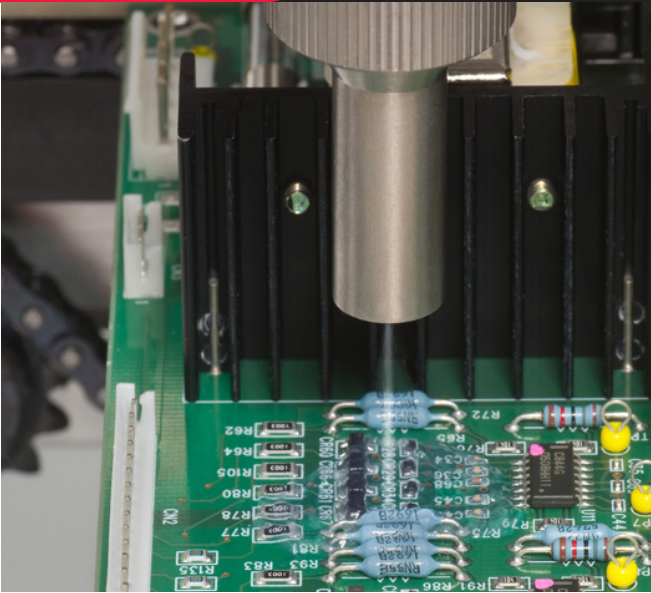




INNOVATION. **PRECISION.** EXCELLENCE.



Valve Specifications

Dimensions

190mm x 22mm x 22mm
(7.50 in x 0.866 in x 0.866 in)

Weight

9.5 oz

Viscosity Range

1 cps - Paste

Operating Air Pressure

60 - 100 psi

Maximum Inlet Fluid Pressure

2500 psi

Wetted Components

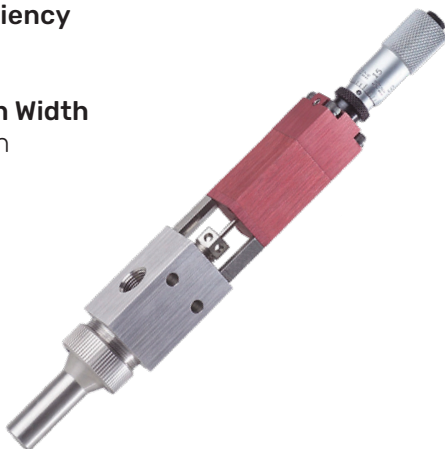
Stainless Steel, Teflon®, Kalrez®

Transfer Efficiency

99%

Spray Pattern Width

0.125 in - 0.5 in



FCS300-ES

Stainless Steel Extended Spray Valve

The FCS300-ES extended spray valve provides a repeatable, concentrated coating film in circular pattern widths ranging from 0.125" to 0.5". The atomized spray process resulting from the FCS300-ES will produce excellent edge definition and coating transfer efficiencies in excess of 99%. The FCS300-ES features a micrometer flow adjustment that makes fine tuning your process easier than ever.

The FCS300-ES has many integrated features including:

- Low pressure, low volume atomized process
- 300 series stainless steel fluid body for superior material compatibility
- Micrometer flow adjustment with lock nut
- Divorced valve design prevents material contamination of the air section
- Compatible with all commercially available conformal coatings
- Wide viscosity range offers versatility for virtually any spray application

For more information, please contact PVA at info@pva.net or contact your local representative.

Teflon® and Kalrez® are registered trademarks of Dupont.

Headquarters
6 Corporate Drive | Halfmoon, NY 12065
tel +1 518 371 2684 | fx +1 518 371 2688
www.pva.net | info@pva.net

FCS300-ES Mounting Dimensions

