



INNOVATION. **PRECISION.** EXCELLENCE.



Valve Specifications

Dimensions

114.3 mm x 63.5mm
(4.5 in x 2.5 in)

Weight

Stainless Steel 3.7lbs (1.7kg)

Viscosity Range

1 - 500,000 cps

Operating Air Pressure

70-100 PSI

Maximum Inlet Fluid Pressure

1500psi

Valve Options

PC200R-SS

1:1 ration manifold with stainless wetted section

PCS200RW-SS

Wide ratio manifold with stainless wetted section

PC200-TCM

1:1 ratio manifold with stainless wetted section for thermal pastes

PC200R-SS

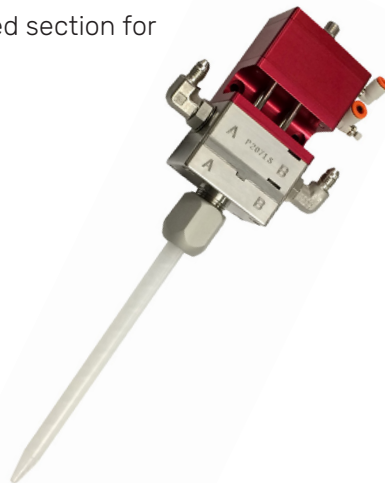
Two Component Mixing Valve

The PC200R-SS is ideal for any two component bead, dot, potting, or encapsulation project. The PC200R-SS can be integrated with a PVA automated meter mix process or used in a handheld operation. The PC200R-SS is compatible with standard bell inlet disposable static mixers.

The PC200R-SS has many benefits and features including:

- Stainless steel fluid body for superior material compatibility
- Divorced valve design prevents material contamination of the air body
- Separate material paths prevent mixing prior to leaving the valve body
- High pressure capability for consistent processing of viscous materials

For more information, please contact PVA at info@pva.net or contact your local representative.



Headquarters
6 Corporate Drive | Halfmoon, NY 12065
tel +1 518 371 2684 | fx +1 518 371 2688
www.pva.net | info@pva.net

PC200 Mounting Dimensions

